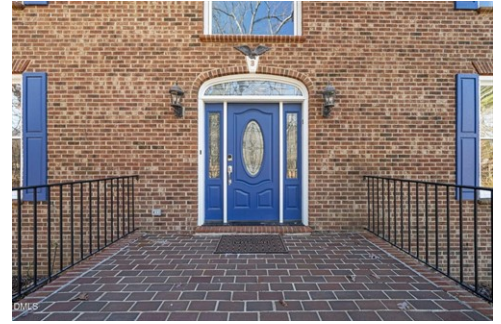




\$ 1,240,000



5223 Margon Pl, Hillsborough, NC 27278

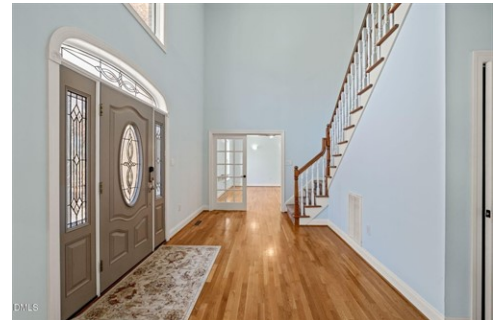
- » Beds: 4 | Baths: 3 Full, 1 Half
- » MLS #: 10135319
- » Single Family | 4,156 ft² | Lot: 10.38 acres
- » More Info: 5223MargonPl.IsForSale.com



Anna S. Terry
(919) 730-8789 (Mobile)
Anna@AnnaTerryRealty.com
<http://www.AnnaTerryRealty.com>



Keller Williams Elite Realty
245 NC HWY 54 E
Suite 101
Durham, NC 27713
(919) 730-8789



5223 Margon Place is a truly exceptional estate set on over 10 private acres just minutes from Chapel Hill and Hillsborough. This expansive home offers thoughtfully designed living spaces ideal for both everyday comfort and gracious entertaining. Featuring two spacious primary bedrooms—one on the main level and one on the second floor—the layout provides flexibility for multigenerational living or long-term guests. A formal living room welcomes gatherings, while the impressive family room showcases a soaring cathedral ceiling with rich wood accents creating a warm and inviting focal point. Gleaming hardwood floors span the main level and extend into portions of the second floor. The chef's kitchen is a standout, complete with a high-end industrial gas range, expansive granite center island, abundant cabinetry, stainless steel appliances, and dual sinks for enhanced functionality. The space is flooded with natural light and features extensive recessed lighting, along with a unique expanded window—perfect for cultivating fresh herbs year-round. Enjoy seamless indoor-to-outdoor living with multiple access points to both covered and expansive open decks, ideal for entertaining family and friends while taking in the tranquil natural surroundings. The second-floor primary suite offers a beautifully updated bath with a spacious walk-in shower, dual vanities, custom cabinetry, hardwood flooring, and a generous walk-in closet. The

